

Double Battery Life for your Android device with IPMPlus™

1 Overview

The onset of the digital economy has led to the rapid proliferation of mobile devices, such as smartphones and tablets. These mobile devices run a variety of applications and are slowly replacing desktops and laptops as the digital productivity devices of the future.

Mobile devices are now a fashion statement. It is extremely embarrassing to watch the battery die in front of a group of people to whom we're showing off a snippet of the latest Netflix drama like 'House of Cards'. Similarly, charging the mobile device when we can use it for watching a live feed of a T20 cricket match isn't a productive use of the device. Yet, all these devices are power-hungry and often cause rapid battery drain.

IPMPlus™ for Android uses innovative algorithms to intelligently manage power consumption and increases the charge time while maximizing the battery life. It works on mobile devices of many types, from Aakash Tablet to Samsung Galaxy S4, with battery savings of more than 50%. IPMPlus™ also speeds up performance by cleaning up unused memory and cause zero battery leakage when the device is idle, e.g. you can leave your tablet idle for 2 days without charging and continue to use with the same battery capacity as of 2 days earlier. It has been certified for all Android phones and has been shown to increase the inter-charge duration by up to 3 times.

2 Key features of IPMPlus™

	LITE	PRO	PREMIUM	OEM
<i>Deep Sleep Power Saver – Manual</i>	Y	Y	Y	Y
<i>Deep Sleep Power Saver – Automatic</i>	N	Y	Y	Y
<i>Memory Cleaner</i>	Y	Y	Y	Y
<i>Graphical Memory Cleaner</i>	N	N	Y	Y
<i>System Battery Graph and deep information</i>	Y	Y	Y	Y
<i>Active Usage Power Saving</i>	N	Y	Y	Y
<i>Control & Schedule Wi-Fi, Data, GPS, Silent Mode, Airplane Mode centrally</i>	N	Y	Y	Y
<i>Central Control of Device Settings</i>	N	Y	Y	Y
<i>Custom Configuration for device with much higher savings – tuned to a device model with root access for device manufacturers</i>	N	N	N	Y
<i>Cloud Analytics – analysis of battery health, correlated to device stats, system stats and performance</i>	N	N	N	Y
<i>Support for Android 2.x, 3.x, 4.x</i>	Y	Y	Y	Y

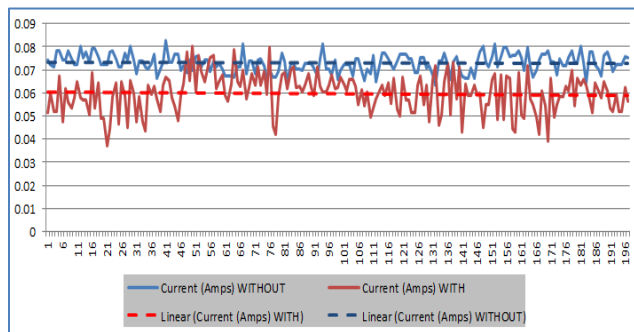
3 Comparison with other market leading offerings

IPMPlus™ is unique in its ability to save power, during both idle and active usage periods. The table below summarizes how we compare with other market leading offerings.

	IPMPlus	Other leading FREE apps in Google Play
<i>Deep rooted sleep optimizations for idle savings</i>	Y	N
<i>Power Savings data available via Schneider High Precision energy meters and micro-current measurement devices</i>	Y	N
<i>Generic across architecture, processors, device models</i>	Y	Y
<i>Advanced Scheduling (not just preset profiles)</i>	Y	N
<i>Learning Engine on usage patterns</i>	Y	N
<i>Wi-Fi connection – deep rooted optimizations (not just on and off)</i>	Y	N
<i>Further battery savings with root access</i>	Y	N
<i>Advanced Memory Cleaner</i>	Y	N
<i>Battery Savings proven even in Airplane mode using high precision energy meters</i>	Y	N
<i>Battery Savings even when services are in use (does not rely on services turning on & off)</i>	Y	N

4 Test Results

IPMPlus™ performance is supported by proven results, with measurements using high precision current and energy meters in our lab. Some of the test results are shown below.



Micro Current measurements WITH and WITHOUT IPMplus on a 7” tablet while running a video



Galaxy S4 after 57 hours without charging and moderately heavy usage (Note voice calls and others) !!

Test case	Test Start Meter Reading in Watts Hour	Test End Meter Reading in Watt Hour	Power Consumption in Watt Hours	Power Savings %
Without IPMPlus	73.193832	73.196686	0.002854	
IPMPlusLite	73.172548	73.173872	0.001324	54.43%

Milli-Watt-Hour measurements on a popular dual SIM phone in the market under IDLE conditions WITH & WITHOUT IPMPlus showing 54% power savings during idle time

	Energy Consumed in Watt Hr	Initial Battery Charge	Final Battery Charge
With IPMPlus Pro	0.0299163	91%	97%
Without IPMPlus Pro	0.0580049	91%	95%

**50% Faster Charging,
48 % reduction in Energy Consumed**

High precision energy meter showing faster charging and lesser power consumption during charging (measurements over a 30 minutes charging cycle

5 Feedback from the field

“this app does exactly what it claims to do, unlike many 'task killer' wastes of time/storage/money. From having to recharge my phone AT LEAST once a day I now get SIGNIFICANTLY longer standby time - once (with little use) it actually lasted just under 4 days! Straight up, this saves recharging necessities ergo extends ur overall long term battery life too. + support from the developers is first class with quick response times. U'd be a mug not to buy this!”

“Perfect for Sony Xperia P I was charging my phone daily till I installed this product. With moderate usage it now lasts 2 - 3 days. The best thing about this product is you don't need to fiddle with any settings - install it and let it do the job. Very good product, must for every android device.”

“Yes this does indeed work I have tried a few sleep apps in the market and this application really does work and without other stuff built in such as disconnecting my radio at certain times or adjusting my light settings etc. I like this application because I already have those types of apps and I needed something to compliment it and now I can get at least 17-18 hours of "Standby" time. Please read and understand the apps info before posting it really helps them further research into making apps better. Motorola Photon Q”

“50 % increase in battery life I own a 1.5 year old motorola defy +. Though it has a very powerful battery, it used to get exhausted in a day, due to heavy use of internet. Since I installed this app, the battery lasts roughly for 1.5 days. It hardly drains when the phone is idle. Just the app I wanted.”